

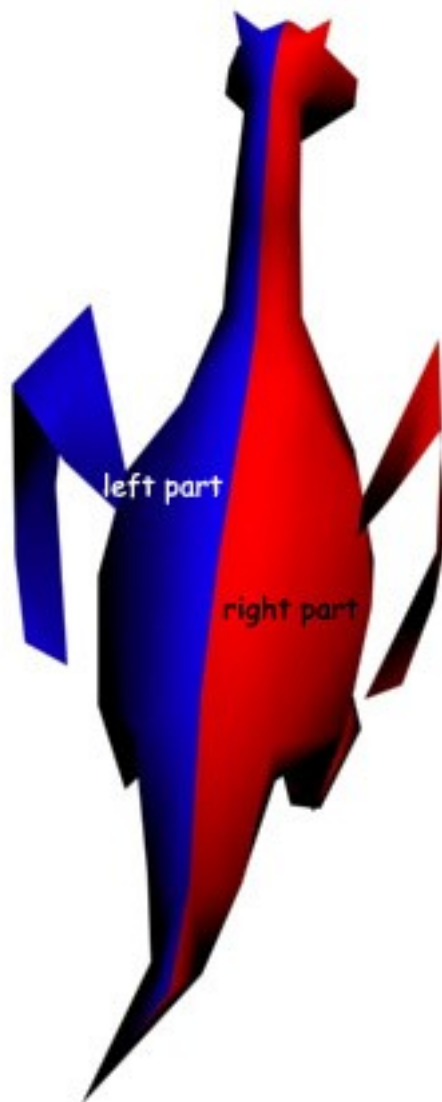
Who wants a Dino-Fly?

A visual guide for making a papercraft model
by
Plamen Donev

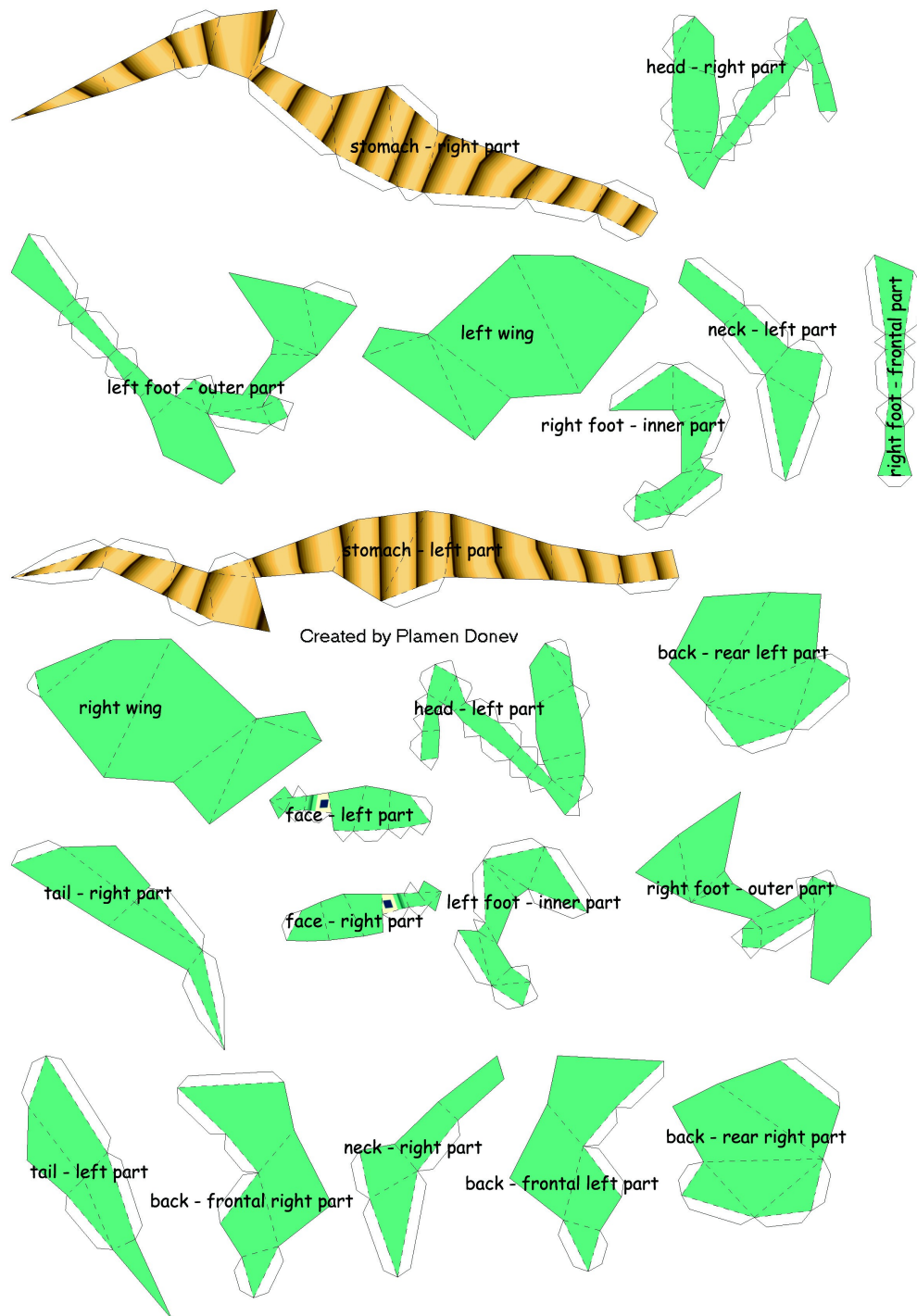


Chapter 1: The unfolds description

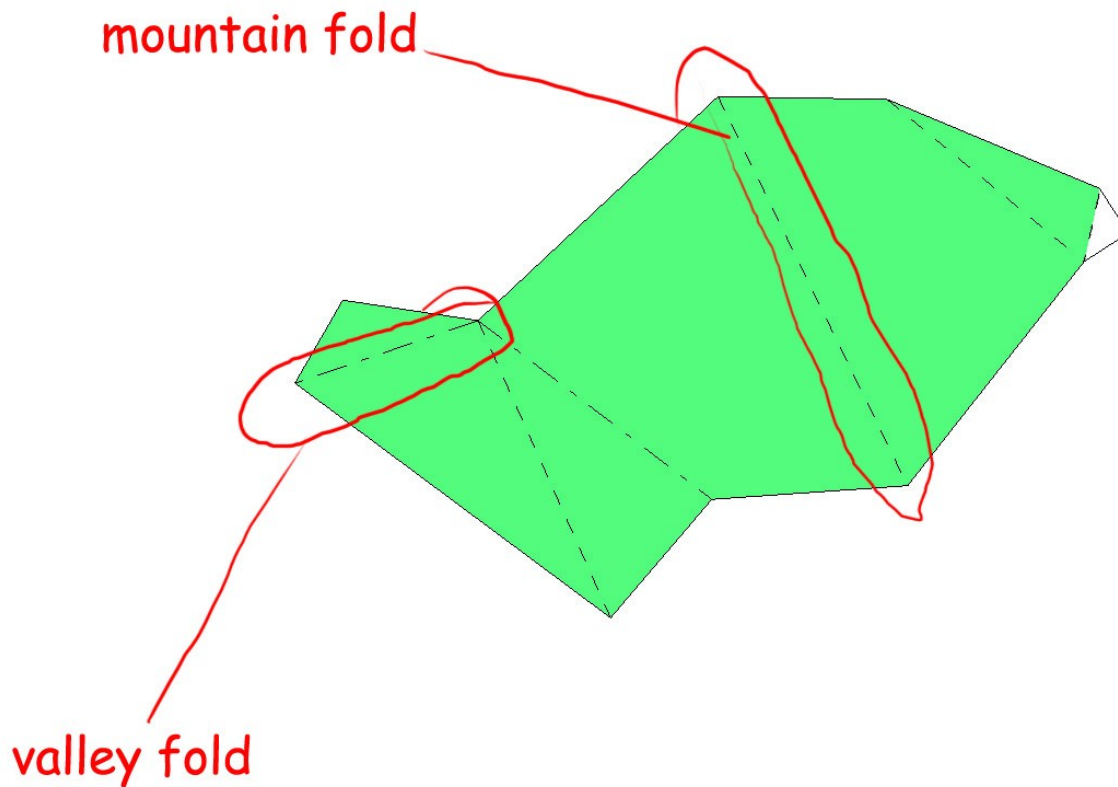
We'll assume that the right part of the Dino-fly is the red one and the blue one is the left part. I'll mark the separate parts of the unfold, according to this condition.



I printed the unfolds on a 250g Xerox Colotech+ paper. It's strong enough and in my opinion it's perfect for papercraft models.



Now, about the fold marks:



NOTE: At some of the illustrations, there are edges that are not marked with dotted line on the unfolds, that's because of the triangulation of the polygons on the 3D models I rendered for the illustrations. Do not fold there. Fold only there, where it's marked on the unfolds.

Chapter 2: Assembling the Dino-Fly

Here I'll describe the assembling of the separate parts, in the way I did it. It's possible to assemble the papercraft model in other ways. First of all you'll need to cut out the separate parts (cut only at the solid lines). I used a paper knife-cutter. As for the glue – I used “Tesa® Alleskleber stark + schnell” . Now, lets start with the fun! :)

I started with the stomach. I assume that you already cutted out all of the parts, so take the two separate parts of the stomach fold them like this:



and glue them, you must come out with something similar like this:



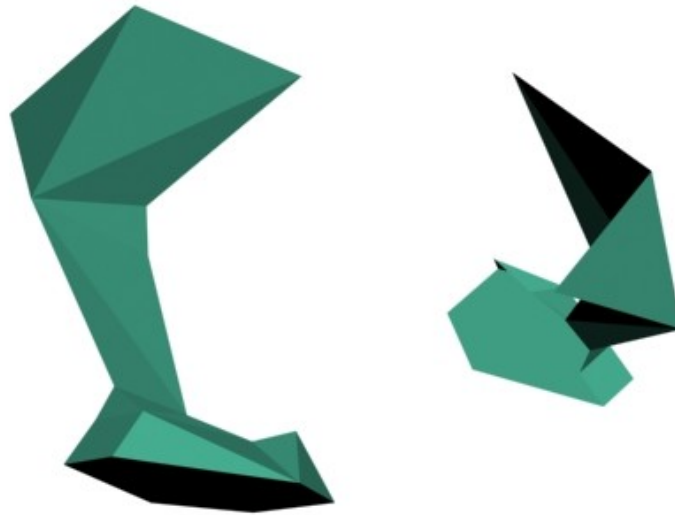
This is a view of the stomach, looked from below.

Then I assembled the legs. Since they're almost symmetrical (the frontal part of the right foot is separated. I wanted to fill out the empty space on the paper as much as possible), I'll describe the assembling of the right foot.

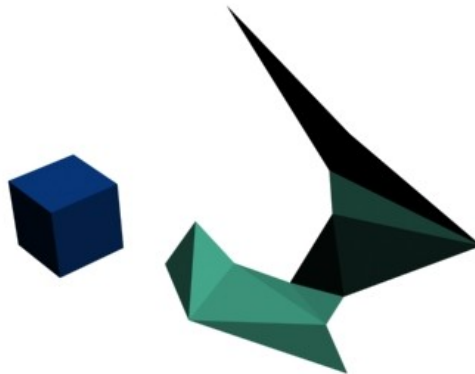
Fold the frontal part like this:



Fold the outer part and glue the flaps where it's necessary at the base of the foot, you'll come out with something like this:

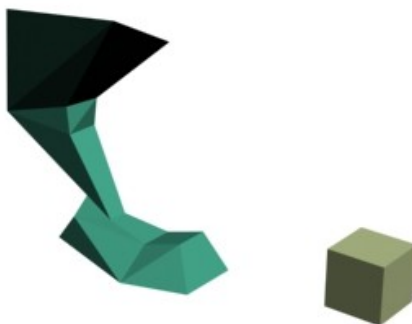


Then fold the inner part of the leg:



NOTE: At some illustrations you'll see a small cube. I put the cubes around the folded objects, just for your orientation.

Glue down all parts of the leg in this:



Fold and glue the other leg, then glue down the stomach and the two legs in this:



The next step is the neck. Fold the parts like this:



Glue the separate parts together:



Glue the neck to the stomach and the legs:



Now, fold the tail parts and glue them down:



Again, note that there are edges that don't persist as markings on the unfolds, do NOT fold there!

After the tail dries out, glue it to the body:



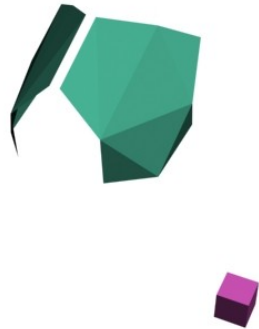
It's time for the back. I started with the frontal part:



Glue the parts and then add them to the body:

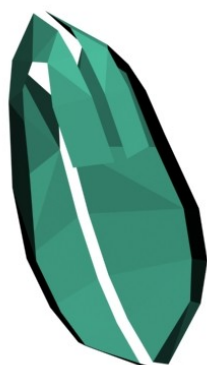


If you find it more easy, you could glue the separate parts of the back to the body, one by one.
Do the same with the rear part of the back.

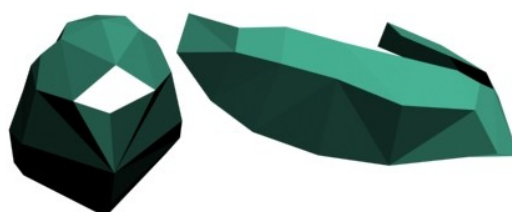


Dino is almost ready. It's time for the head. This is the time to mention that the ears of Dino, do not have flaps. The reason is that they're very tiny and it will be almost impossible to glue them down. So how did I glued them anyway? Simple – I folded them and dropped a drop of glue in the hollow part they form when folded (the ears are practically small pyramids without base. The place which represents the base of the little pyramids is inside the head, so I dropped a drop of glue and quickly filled the opening with some paper.). I made a flap on the unfold, which flap is under the base of the pyramids. When I filled the ears with paper, the flaps became good base to glue the ears to the rest of the head (note that the ears are part of the face unfolds and the flaps for gluing the base of the ears are part of the head unfolds).

This is the head, viewed from top-right position.



On the right there's a view of the head parts glued down. The two triangles under the white romb are folded inside. Be careful there, it is the most tricky part. The flaps must be folded, pointing outside from the romb.



Fold and glue down the face. Remember the part with the ears!



Assemble the head, wait until it dries and glue it to the rest of the body. I think that there's no point in explaining how to fold and glue the wings, they're simple. Just follow the markings for folding.

Congratulations! Now you have a Dino - Fly!

